



**GERARD
UNGER '24
SCHOLARSHIP**

FREQUENTLY ASKED QUESTIONS

- 01** Where do I submit my project?
- 02** Who can apply?
- 03** What are the minimum submission requirements?
- 04** Does it need to include a Latin character set?
- 05** Upon what criteria are submissions judged?
- 06** My course has only one lecture on type design. Can I submit my project anyway?
- 07** When is the deadline for submission?
- 08** When will the winner(s) be announced?
- 09** How many winners will be awarded?
- 10** If awarded, what is expected of the winner(s)?
- 11** As part of the Gerard Unger Scholarship programme, how many weekly work hours will the winner(s) be expected to set aside to complete their typeface?
- 12** As a winner, may I attend school or have a job during the Gerard Unger Scholarship programme?
- 13** How long is the total mentorship programme expected to be?

- 14** What should I include in my submission?
- 15** How should I name the files?
- 16** What should be in the visual material?
- 17** How do I present the best glyphs?
- 18** How do I present the character set?
- 19** How do I present the design space?
- 20** How do I present the styles and weights?
- 21** How do I present examples of text settings?
- 22** How do I present examples of fake type in use?

Where do I submit my project?

Our online form anonymises submissions to make the process easy and fair. Submit yours through the online form below.

<https://forms.gle/NV6hb8sjS1gfy8KH9>

Who can apply?

All individuals either enrolled in or graduating from a typography course in 2023 or 2024 are invited to submit their designs for consideration.

What are the minimum submission requirements?

Type families must have at least two styles, such as upright and italic, and must include the Latin script.

Does my submission need to include a Latin character set?

Yes, it must include the Latin alphabet, but it doesn't have to be limited to Latin. We welcome multiscrypt design submissions that include a Latin component.

Upon what criteria are submissions judged?

All submissions are judged by the entire TypeTogether team based upon their design merits, applicability within the design world, possible extensibility to other scripts, aesthetic interest, marketability, time and effort required to complete it, and its overall position within and contribution to the TypeTogether library.

My course has only one lecture on type design. Can I submit my project anyway?

Yes, all individuals either enrolled in or graduating from a typography course in 2023 or 2024 are eligible. It doesn't matter what kind of type design course it was.

When is the deadline for submission?

All projects submitted by **1 June 2024** will be taken into consideration.

When will the winner(s) be announced?

At least one winner will be announced by **1 August 2024**.

How many winners will be awarded?

One or two projects at the most are awarded with the full scholarship, which includes direct mentorship by the TypeTogether team, a paid internship to finish the typeface, and a publishing contract upon completion, along with a few other perks.

Depending on the number of submissions, up to a maximum of six additional projects will receive Merit awards, which includes at least one individualised type critique session with founders José Scaglione and Veronika Burian.

If awarded, what is expected of the winner(s)?

Merit awardees will have no contractual obligations, and will receive a digital badge to use at their discretion to publicly announce their accomplishment. As always, we will announce them and their project on our website and social media. They will also receive one individualised, in-depth critique with co-founders Veronika and José.

The grand prize winner(s) will receive a digital winner's badge to use at their discretion to publicly announce their accomplishment. Instead of one individualised critique, the winner(s) will begin TypeTogether's mentorship programme with its attendant

professional contract, culminating in their typeface being published exclusively with TypeTogether. Winners are expected to complete a certain number of weekly work hours in exchange for a stipend, and show regular progress updates. They will become part of our extended font family by getting to join our Tuesday company meetings, and receive regular teaching, insights, guidance, and support from TypeTogether's team as their typeface moves toward release. Winners will attend our annual in-person TypeTogether meeting, and will also receive funding (up to €1,000) to attend an agreed top-level typography, design, or educational conference.

As part of the Gerard Unger Scholarship programme, how many weekly work hours will the winner(s) be expected to set aside to complete their typeface?

Only part-time hours are expected, averaging 16–20 hours per week.

As a winner, may I attend school or have a job during the Gerard Unger Scholarship programme?

Yes, of course! Because the mentorship programme is only part-time, we expect the winner(s) to keep moving forward with their life, commitments, and schedule. And you're in good company since almost all the past Gerard Unger Scholarship winners have continued with school and career while completing their typeface with us. We are committed to our winners and will make the schedule and expectations work for everyone involved.

How long is the total mentorship programme expected to be?

The total time allotted for the mentorship is around one year and is guaranteed through the font release date. Of that time, the funded portion of the internship is five months at €1,000 per month, for a total of €5,000.

What should I include in my submission?

We need to see visual material showcasing your typeface in the best possible way. Show us the best glyphs, how the design works in text, display, and headlines, and if possible, show examples of imagined uses.

Don't forget to include the current character set in every script, no matter how limited or advanced it might be.

How should I name the files?

Do not include your name in the file name. Please only name your files with the typeface name and the content in the following way:

typefacename.pdf

typefacename_extra.pdf

What should be in the visual material?

In no more than 12 pages (10Mb max horizontal, for web), include the following material:

- best glyphs
- current full character set
- design space
- styles and weights
- examples of text settings

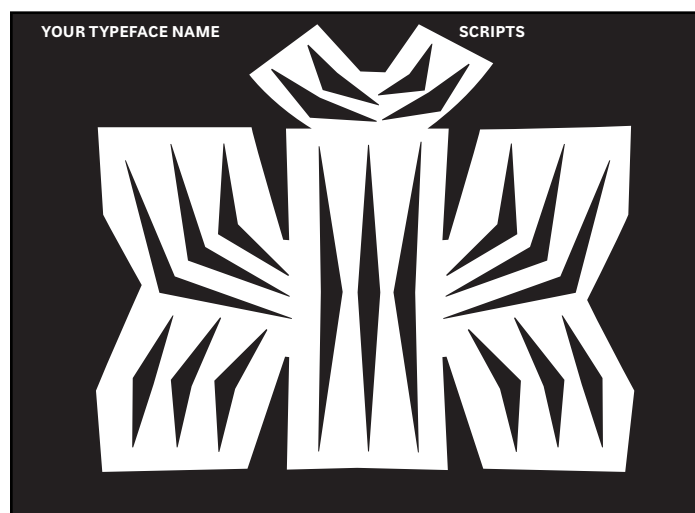
You may include the typeface name, but do not include your name, the school name, or any identification.

We do not provide a template, but you can follow the examples on the following pages.

How do I present the best glyphs?

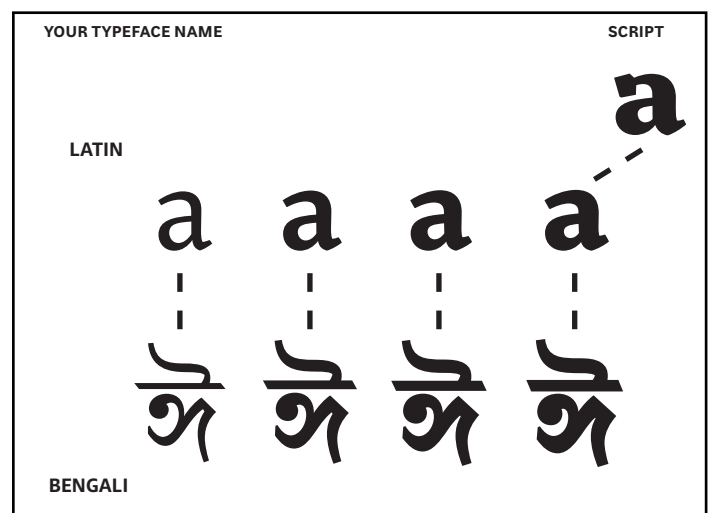
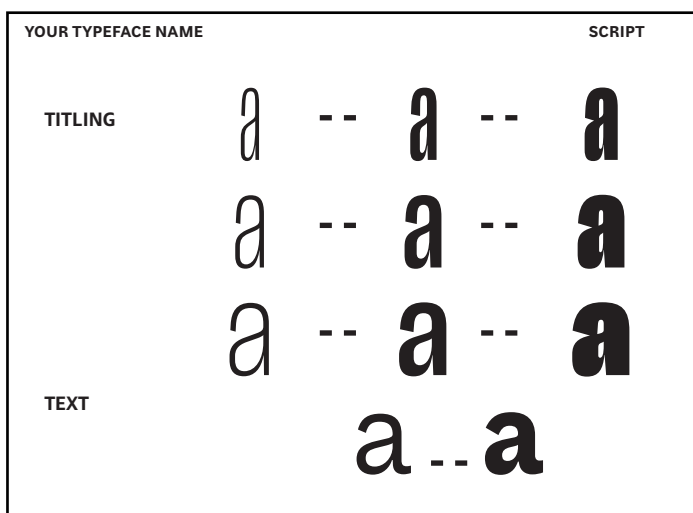
Include one page with black text on white background and another one with white text on black background. Show us your favorite glyphs that are most representative of the family.

Do not include your name, the school name, or any identification on the visuals.



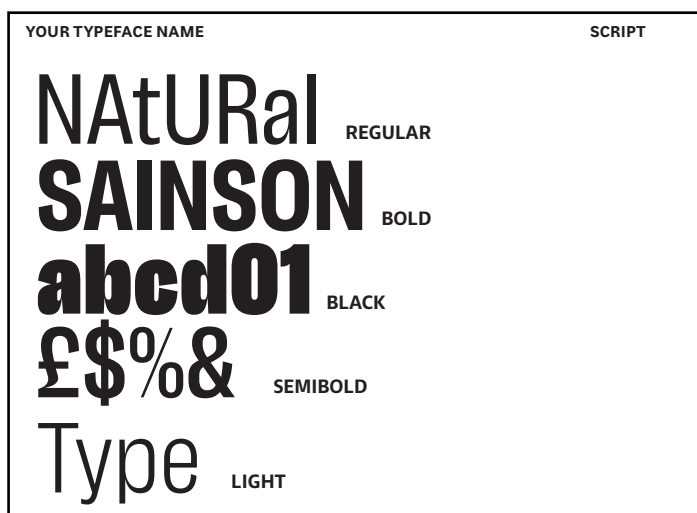
How do I present the design space?

Using one page, show the styles and weights. We don't expect all the styles to be developed but we do want to see the possibilities of the project, even if there is only regular and italic. How could it grow? How could it be extended?



How do I present the styles and weights?

Show the styles in one or two pages using words in lowercase and uppercase. If you don't have enough characters, just show a few of each. You can use white or black background. Show all the scripts in your project in the styles in which they have been developed.



How do I present the text settings?

Show the typeface in different sizes over several pages, depending on its intended use:

72pt for titling

24–48pt for headlines

14–18pt for subheads

8–12pt for text and body sizes

6–8pt for micro or captions

See next page for examples.

YOUR TYPEFACE NAME	SIZE	SCRIPT
Tras anunciar que «las circunstancias económicas actuales nos conducen a aunar esfuerzos», Pilar Majuelos, ama de casa de 52 años, ha anunciado a su familia que se ve obligada a fusionar dos paquetes de pasta distintos, en concreto medio paquete de macarrones marca		<i>Tras anunciar que «las circunstancias económicas actuales nos conducen a aunar esfuerzos», Pilar Majuelos, ama de casa de 52 años, ha anunciado a su familia que se ve obligada a fusionar dos paquetes de pasta distintos, en concreto medio paquete de macarrones marca Gallo con un puñadito de espirales</i>
Tras anunciar que «las circunstancias económicas actuales nos conducen a aunar esfuerzos», Pilar Majuelos, ama de casa de 52 años, ha anunciado a su familia que se ve obligada a fusionar dos paquetes de pasta distintos, en concreto medio paquete		

YOUR TYPEFACE NAME	SIZE	SCRIPT
گنگ بزرگترین رود شبه‌قاره هند و دارای ۶۰۵۲ کیلومتر طول است. این رود از ایالت اوتارانچاند در کشور هندوستان و از مرکز کوه‌های هیمالیا سرچشمه می‌گیرد و سراسر شمال هند و نیز کشور بنگلادش را سیراب می‌کند و سپس از طریق یک دلتا به خلیج بنگال		
گنگ بزرگترین رود شبه‌قاره هند و دارای ۶۰۵۲ کیلومتر طول است. این رود از ایالت اوتارانچاند در کشور هندوستان و از مرکز کوه‌های هیمالیا سرچشمه می‌گیرد و سراسر شمال هند و نیز کشور		
گنگ بزرگترین رود شبه‌قاره هند و دارای ۶۰۵۲ کیلومتر طول است. این رود از ایالت اوتارانچاند در کشور هندوستان و از مرکز کوه‌های هیمالیا سرچشمه می‌گیرد و سراسر شمال هند و نیز کشور بنگلادش را سیراب می‌کند و سپس از طریق یک		

YOUR TYPEFACE NAME	SIZE	SCRIPT
UNA MADRE da inicio a un proceso de fusión de dos paquetes de pasta distintos		
UNA MADRE da inicio a un proceso de fusión de dos paquetes de pasta distintos		
UNA MADRE da inicio a un proceso de fusión de dos paquetes de pasta distintos		
UNA MADRE da inicio a un proceso de fusión de dos paquetes de pasta distintos		
UNA MADRE da inicio a un proceso de fusión de dos paquetes de pasta		

YOUR TYPEFACE NAME	SIZE	SCRIPT
توندرا হল মেরু অঞ্চলের দিগন্ত বিস্তৃত বৃক্ষহীন সমতল ভূমি, যা গ্রীষ্মকালে জলময় থাকে ও শীতকালে জমে শক্ত হয়ে যায়। তুন্দ্রা শব্দটি রাশিয়ান তুন্দ্র থেকে এসেছে, যা	In physical geography, tundra is a type of biome where the tree growth is hindered by low temperatures and short growing seasons. The term tundra comes through	
তুন্দ্রা হল মেরু অঞ্চলের দিগন্ত বিস্তৃত বৃক্ষহীন সমতল ভূমি, যা গ্রীষ্মকালে জলময় থাকে ও শীতকালে জমে শক্ত হয়ে যায়। তুন্দ্রা শব্দটি রাশিয়ান তুন্দ্র থেকে এসেছে, যা	In physical geography, tundra is a type of biome where the tree growth is hindered by low temperatures and short growing seasons. The term tundra	
তুন্দ্রা হল মেরু অঞ্চলের দিগন্ত বিস্তৃত বৃক্ষহীন সমতল ভূমি, যা গ্রীষ্মকালে জলময় থাকে ও শীতকালে জমে শক্ত হয়ে যায়। তুন্দ্রা শব্দটি রাশিয়ান তুন্দ্র থেকে এসেছে, যা	In physical geography, tundra is a type of biome where the tree growth is hindered by low temperatures and short growing seasons. The term tundra	
তুন্দ্রা হল মেরু অঞ্চলের দিগন্ত বিস্তৃত বৃক্ষহীন সমতল ভূমি, যা গ্রীষ্মকালে জলময় থাকে ও শীতকালে জমে শক্ত হয়ে যায়। তুন্দ্রা শব্দটি রাশিয়ান তুন্দ্র থেকে এসেছে, যা	In physical geography, tundra is a type of biome where the tree growth is hindered by low temperatures and short growing seasons. The	

How do I present examples of fake type in use?

This is not a requirement, but we invite you to send it to help us see the typeface in different situations — those that best represent the typeface. We won't show examples here as we think it is best you explore the font family options.

There are no limits on colours, sizes, styles, or uses. Add any additional information here you think is missing or important to understanding your typeface.

Please do not use your name, university affiliation, or identifying material in this PDF.

What if I need more information?

Drop us an email to:
scholarship@type-together.com
and we will respond.



**GERARD
UNGER '24
SCHOLARSHIP**

**GOOD
LUCK!**