

GERARD UNGER SCHOLARSHIP

2023

GERARD UNGER SCHOLARSHIP'23

- 01** Where do I submit my project?
- 02** Who can apply?
- 03** What are the minimum submission requirements?
- 04** Does it need to include a Latin character set?
- 05** Upon what criteria are submissions judged?
- 06** My course has only one lecture on type design. Can I submit my project anyway?
- 07** How many winners will be awarded?
- 08** When is the deadline for submission?
- 09** When will the winner(s) be announced?
- 10** What do I need to submit?
- 11** How should I name the files?
- 12** What should be in the visual material?
- 13** How do I present the best glyphs?
- 14** How do I present the character set?
- 15** How do I present the design space?
- 16** How do I present the styles and weights?
- 17** How do I present examples of text settings?
- 18** How do I present examples of fake type in uses?

GERARD UNGER SCHOLARSHIP'23

Where do I submit my project?

This year we have created an online form to make the submission process easier and more fair by anonymising submissions.

<https://forms.gle/WQLgxqKaMSz4Geuk8>

GERARD UNGER SCHOLARSHIP'23

Who can apply?

All individuals either enrolled in or graduating from a typography course in 2022 or 2023 are invited to submit their designs for consideration.

GERARD UNGER SCHOLARSHIP'23

What are the minimum submission requirements?

Type families must have at least two styles, such as upright and italic, and must include the Latin script.

GERARD UNGER SCHOLARSHIP'23

Does my submission need to include a Latin character set?

Yes, it must include the Latin alphabet, but it doesn't have to be limited to Latin. We welcome submissions that present multiscript designs that include a Latin component.

**Upon what criteria are
submissions judged?**

All submissions are judged by the entire TypeTogether team based upon their design merits, applicability within the design world, possible extensibility to other scripts, aesthetic interest, marketability, time and effort required to complete it, and overall place in the TypeTogether library.

GERARD UNGER SCHOLARSHIP'23

My course has only one lecture on type design. Can I submit my project anyway?

Yes, all individuals either enrolled in or graduating from a typography course in 2022 or 2023 are eligible. It doesn't matter what kind of type design course it was.

How many winners will be awarded?

One project is awarded with the full scholarship, which includes direct mentorship by the TypeTogether team, a paid internship to finish the typeface, and a publishing contract upon completion, along with a few other perks. Depending on the number of submissions, up to a maximum of six additional projects will receive Merit awards, which includes at least one individualised type crit session with founders José Scaglione and Veronika Burian.

GERARD UNGER SCHOLARSHIP'23

When is the deadline for submission?

All projects submitted by 15 June 2023 will be taken into consideration.

When will the winner(s) be announced?

At least one winner will be announced by the end of July 2023.

What do I need to submit?

We need to see visual material showcasing your typeface in the best possible way. Show us the best glyphs, how the design works in text, display, and headlines, and if you can, show examples of imagined uses.

Don't forget to include the current character set in every script, no matter how limited or advanced it might be.

How should I name the files?

Do not include your name in the file name. Please name your files with the typeface name and the content in the following way:

typefacename.pdf

typefacename_extra.pdf

What should be in the visual material?

In no more than 12 pages (10Mb max horizontal, for web) include the following material:

- best glyphs
- current full character set
- design space
- styles and weights
- examples of text settings

You may include the typeface name, but do not include your name, the school name, or any identification.

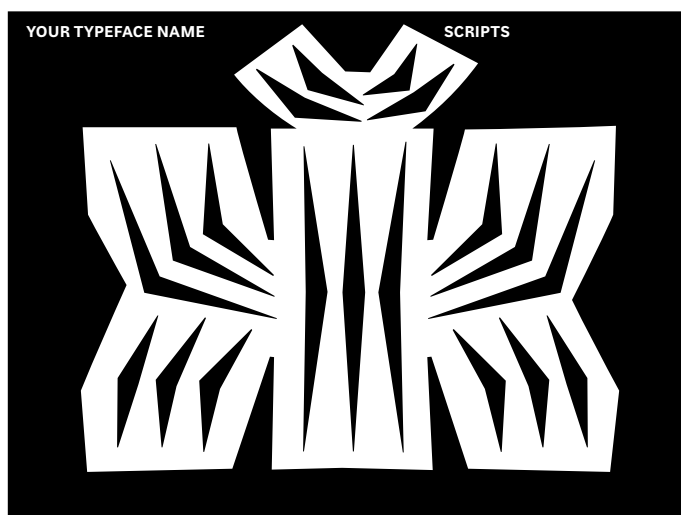
We do not provide a template, but you can follow the examples on the following pages.

GERARD UNGER SCHOLARSHIP'23

How do I present the best glyphs?

Include one page with black text on white background and another one in white text on black background. Show us the best glyphs you have.

Do not include your name, the school name, or any identification on the visuals.



How do I present the design space?

Using one page, show the styles and weights. We don't expect all the styles to be developed but we do want to see the possibilities of the project, even if there is only regular and italic. How could it grow? How could it be extended?

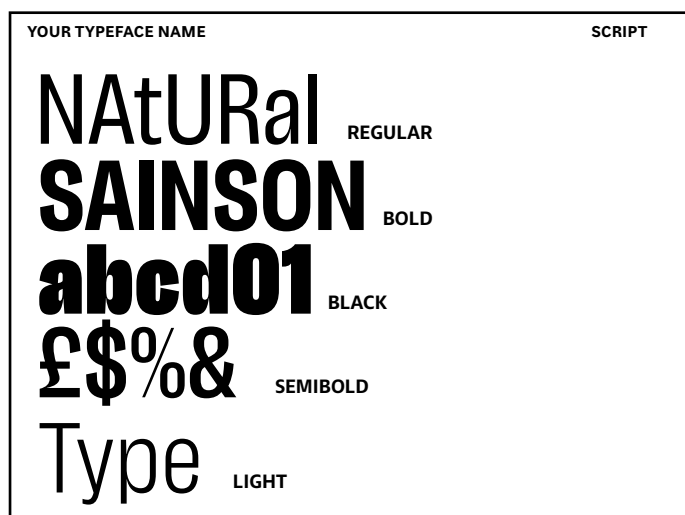
| YOUR TYPEFACE NAME | SCRIPT |
|--------------------|----------------------------------|
| TITLING | <i>a</i> -- a -- a |
| | <i>a</i> -- a -- a |
| | <i>a</i> -- a -- a |
| TEXT | <i>a</i> -- a |

| YOUR TYPEFACE NAME | SCRIPT |
|--------------------|-------------------------------------|
| LATIN | <i>a</i> a a a |
| | <i>ঐ</i> ঐ ঐ ঐ |
| BENGALI | |

GERARD UNGER SCHOLARSHIP'23

How do I present the styles and weights?

Show the styles in one or two pages using words in lowercase and uppercase. If you don't have enough characters, just show a few of each. You can use white or black background. Show all the scripts in your project in the styles in which they have been developed.



How do I present the text settings?

Show the typeface in different sizes over several pages, depending on its intended use: 72pt for titling / 24-48pt for headlines / 14-18pt for subheads / 8-12pt for text and body sizes / 6-8pt for micro or captions.

| YOUR TYPEFACE NAME | SIZE | SCRIPT |
|---|------|---|
| Tras anunciar que «las circunstancias económicas actuales nos conducen a aunar esfuerzos», Pilar Majuelos, ama de casa de 52 años, ha anunciado a su familia que se ve obligada a fusionar dos paquetes de pasta distintos, en concreto medio paquete de macarrones marca | | <i>Tras anunciar que «las circunstancias económicas actuales nos conducen a aunar esfuerzos», Pilar Majuelos, ama de casa de 52 años, ha anunciado a su familia que se ve obligada a fusionar dos paquetes de pasta distintos, en concreto medio paquete de macarrones marca Gallo con un puñadito de espirales marca Hacendado a</i> |
| Tras anunciar que «las circunstancias económicas actuales nos conducen a aunar esfuerzos», Pilar Majuelos, ama de casa de 52 años, ha anunciado a su familia que se ve obligada a fusionar dos paquetes de pasta distintos, en concreto medio paquete | | |

| YOUR TYPEFACE NAME | SIZE | SCRIPT |
|--------------------|------|--|
| | | گنگ بزرگترین رود شبه‌قاره هند و دارای ۶۰۵۲ کیلومتر طول است. این رود از ایالت اوتارانچاند در کشور هندوستان و از مرکز کوه‌های هیمالیا سرچشمه می‌گیرد و سراسر شمال هند و نیز کشور بنگلادش را سیراب می‌کند و سپس از طریق یک دلتا به خلیج بنگال |
| | | گنگ بزرگترین رود شبه‌قاره هند و دارای ۶۰۵۲ کیلومتر طول است. این رود از ایالت اوتارانچاند در کشور هندوستان و از مرکز کوه‌های هیمالیا سرچشمه می‌گیرد و سراسر شمال هند و نیز کشور بنگلادش را سیراب می‌کند و سپس از طریق یک دلتا به خلیج |
| | | گنگ بزرگترین رود شبه‌قاره هند و دارای ۶۰۵۲ کیلومتر طول است. این رود از ایالت اوتارانچاند در کشور هندوستان و از مرکز کوه‌های هیمالیا سرچشمه می‌گیرد و سراسر شمال هند و نیز کشور بنگلادش را سیراب می‌کند و سپس از طریق یک |

| YOUR TYPEFACE NAME | SIZE | SCRIPT |
|---|------|--------|
| UNA MADRE da inicio a un proceso de fusión de dos paquetes de pasta distintos | | |
| UNA MADRE da inicio a un proceso de fusión de dos paquetes de pasta distintos | | |
| UNA MADRE da inicio a un proceso de fusión de dos paquetes de pasta distintos | | |
| UNA MADRE da inicio a un proceso de fusión de dos paquetes de pasta distintos | | |
| UNA MADRE da inicio a un proceso de fusión de dos paquetes de pasta | | |

| YOUR TYPEFACE NAME | SIZE | SCRIPT |
|---|------|---|
| توندرا হল মেরু অঞ্চলের দিগন্ত বিস্তৃত বৃক্ষহীন সমতল ভূমি, যা গ্রীষ্মকালে জলময় থাকে ও শীতকালে জমে শক্ত হয়ে যায়। তুন্দ্রা শব্দটি রাশিয়ান তুন্দ্র থেকে এসেছে, যা | | In physical geography, tundra is a type of biome where the tree growth is hindered by low temperatures and short growing seasons. The term tundra comes through |
| তুন্দ্রা হল মেরু অঞ্চলের দিগন্ত বিস্তৃত বৃক্ষহীন সমতল ভূমি, যা গ্রীষ্মকালে জলময় থাকে ও শীতকালে জমে শক্ত হয়ে যায়। তুন্দ্রা শব্দটি রাশিয়ান তুন্দ্র থেকে এসেছে, যা | | In physical geography, tundra is a type of biome where the tree growth is hindered by low temperatures and short growing seasons. The term tundra |
| তুন্দ্রা হল মেরু অঞ্চলের দিগন্ত বিস্তৃত বৃক্ষহীন সমতল ভূমি, যা গ্রীষ্মকালে জলময় থাকে ও শীতকালে জমে শক্ত হয়ে যায়। তুন্দ্রা শব্দটি রাশিয়ান তুন্দ্র থেকে এসেছে, যা | | In physical geography, tundra is a type of biome where the tree growth is hindered by low temperatures and short growing seasons. The term tundra |
| তুন্দ্রা হল মেরু অঞ্চলের দিগন্ত বিস্তৃত বৃক্ষহীন সমতল ভূমি, যা গ্রীষ্মকালে জলময় থাকে ও শীতকালে জমে শক্ত হয়ে যায়। তুন্দ্রা শব্দটি রাশিয়ান তুন্দ্র থেকে এসেছে, যা | | In physical geography, tundra is a type of biome where the tree growth is hindered by low temperatures and short growing seasons. The |

How do I present examples of fake type in use?

This is not a requirement, but we invite you to send it to help us see the typeface in different situations — the ones that best represent the typeface. We won't show examples here as we think it is best you explore the font family options.

There are no limits on colours, sizes, styles, or uses. You can add any other information you think was missing.

Please do not use your name, university affiliation, or identifying material in this PDF.

GERARD UNGER SCHOLARSHIP'23

What if I need more information?

Drop us an email to:

scholarship@type-together.com

and we will respond.

LEBR
NCE
LABO

2023