

Adelle

A versatile and elegant Slab Serif by *TypeTogether*

A B C D E F G H I J K L

M N O P Q R S T U V W

X Y Z Æ Œ Þ Th ◉ ADELLE REGULAR, 60/78pt

a b c d e f g h i j k l m n o p

q r s t u v w x y z ß æ å Ꞁ

A B C D E F G H I J K L M N O

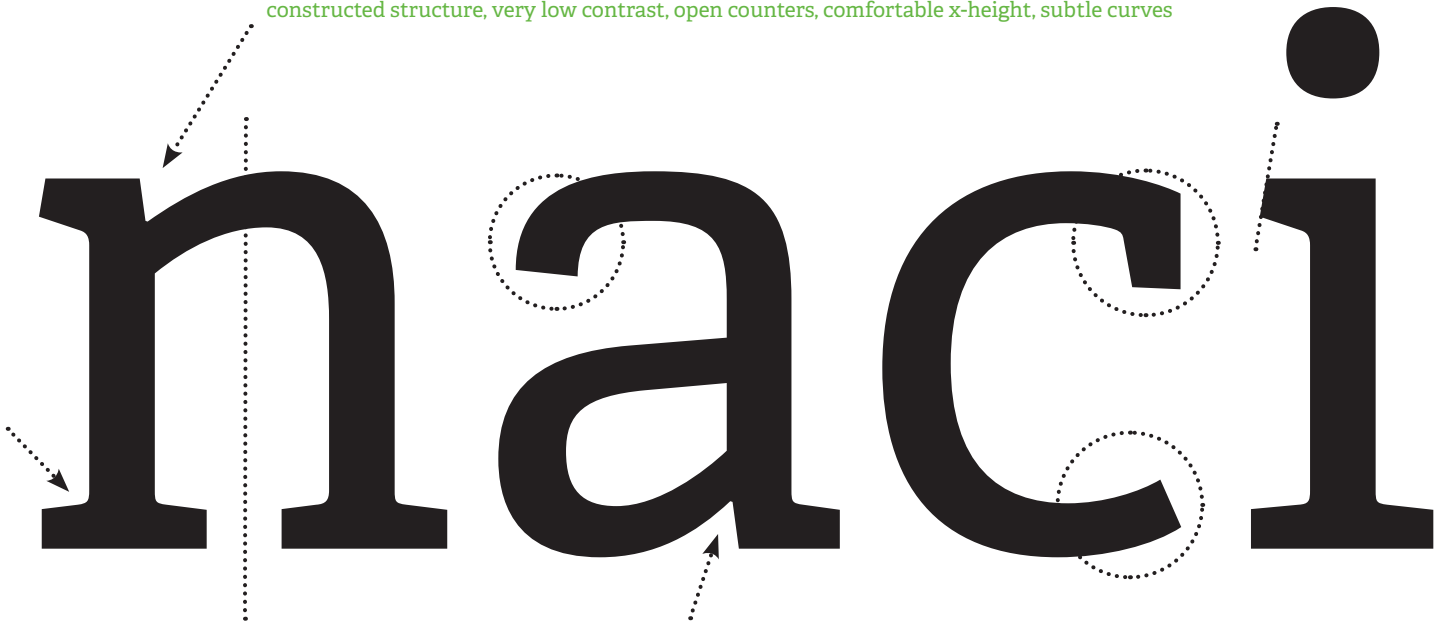
P Q R S T U V W X Y Z Œ Š 3 0 €

{ [(* & ¶ † , : @ ? ! § « » -)] }

€ £ \$ ¥ 0 1 2 3 4 5 6 7 8 9 4/5 8

% 0 1 2 3 4 5 6 7 8 9 € 0 1 2 4 5

constructed structure, very low contrast, open counters, comfortable x-height, subtle curves



A MULTI-PURPOSE SLAB SERIF

While *Adelle* is a slab serif typeface conceived specifically for intensive **editorial use**, mainly in newspapers and magazines, its personality and flexibility make it a real multiple-purpose typeface. The intermediate weights deliver a **very legible and neutral look** when used in text sizes, providing the usual robustness expected in a newspaper font. The unobtrusive appearance, excellent texture and slightly dark color allow it to behave flawlessly in continuous text setting, even in the most demanding editorial applications.

As it becomes larger in print, *Adelle* shows its personality through a series of measured particularities that make it easy to remember and identify. It has **12 styles**, ranging from light to **heavy**, with more than 900 characters per font. Its energetic character, so inherent to slab serif fonts, becomes evident as the typeface is used for subheadings and headlines.

TYPETOGETHER

Veronika Burian and José Scaglione met at the University of Reading whilst completing their MAs in Type Design, launching the independent type foundry *TypeTogether* (TT for short) in 2006. TT developed out of the desire to publish high quality typefaces and work on new type projects together (hence the name). The foundry provides common grounds for intense cooperation with other type designers, creating an interesting and diverse platform.

TypeTogether's main interest is finding innovative and stylish solutions to old problems for the professional market of text typefaces, with a focus on editorial use. This is where the greatest challenges are faced: creating typefaces that perform well in continuous reading, that also have a high degree of personality.

The aesthetic and functional efficiency of TT's fonts are accompanied by excellence in technical performance. This is achieved using the latest font software, creating cross-platform OpenType fonts with extended character sets including: broader language support and all kinds of typographic refinements, such as small caps, ligatures and multiple numeral sets.

In addition to *TypeTogether's* high quality library of retail fonts, TT also provides **custom modifications** and specially tailored typefaces; these can serve as vital elements of a company's visual identity, by communicating a unique feel. Custom typeface projects are developed from solid foundations, based on the client's brief, targeted research and the open dialogue between all parties.

A big advantage of being a small and specialized company is that this allows for closer, and more direct, collaboration with clients; this is often necessary to accomplish their goals, and respond quickly to their needs.

The quality of *TypeTogether's* work has already been recognized in several international competitions, including **TDC and ED-Awards**.



ADELLE LIGHT

[€36.851‰!)

ADELLE EXTRABOLD

acting out

ADELLE BOLD ITALIC

family dad

ADELLE SEMIBOLD AND SEMIBOLD ITALIC

12/15pt Los recursos económicos completan el trípode de recursos indispensables. Estos recursos puede provenir de orígenes (fuentes) diferentes. Dada la importancia central que tienen en el diseño e implementación de las políticas de fomento, vamos a mencionar las fuentes más comunes. *Cada fuente requerirá tiempo y dedicación para ser atendida convenientemente. No solo para establecer estrategias que permitan la obtención del mayor monto posible de recursos, sino porque, por lo general, cada fuente se relaciona con la organización a su cargo mediante procedimientos diferentes y a través de distintos interlocutores.* Si alguna de las fuentes mencionadas no aporta recursos económicos a su organización, o usted consid-

ADELLE REGULAR SMALLCAPS

VÍCEMÉNĚ

ADELLE HEAVY

«accept»

International

Conference will be held in **Kopenhagen** in 2009

Modern time *financial reviewers*

School tests for 7 and 11 years old

Newsreel

GLOBAL

Chic without the suffering: FASHION DISPLAYS its ethical face at the

“Responsibility”

Foreign policy makers

Adelle Opentype features

SMALL CAPS / ALL SMALL CAPS

1234 charming creatures » 1234 CHARMING CREATURES
RADIOLARIANS ? » RADIOLARIANS ?
(abc} n*/ d&e 567890€€ » (ABC} N*/ D&E 567890€€

ALL CAPS

¿para texto? » ¿PARA TEXTO?
1708 a–b [ende] » 1708 A–B [ENDE]

LIGATURES AND DISCRETIONARY LIGATURES

aufbau, fjord, häckeln, strong » aufbau, fjord, häckeln, strong

PROPORTIONAL AND TABULAR FIGURES, OLD-STYLE AND LINING

0123456789€\$¢€¥ƒ » 00123456789€\$¢€¥ƒ
0123456789€\$¢€¥ƒ » 00123456789€\$¢€¥ƒ

FRACTIONS

1/2 3/4 1/6 5/7 2/9 » ½ ¾ ⅙ ⅚ ⅔

SUPERIOR/INFERIOR

H₂O x_{b8} y³⁺⁵ a^lIndex » H₂O x_{b8} y³⁺⁵ a^lIndex

ORDINALS

1st 2th 3rd M^lle 2ⁱeme » 1st 2th 3rd M^lle 2ⁱeme

STYLISTIC SET 1 AND 2

abcdefghijklmnop abcdefgh » ↑↓←→↖↗↘↙↞↠↡↢↣↤↥↦↧↨↩↪↫↬↭↮↯↰↱↲↳↴↵↶↷↸↹↺↻↼↽↾↿↺↻↼↽↾↿↺↻↼↽↾↿

STYLISTIC SET 3 AND 4

123456789 123456789 » ①②③④⑤⑥⑦⑧⑨ ①②③④⑤⑥⑦⑧⑨



typetogether

Type Design Veronika Burian, José Scaglione
WWW.TYPE-TOGETHER.COM